

HOYT ALUMNI ASSOCIATION*
288 SIMPAUG TPKE / 3 MARCHANT RD
WEST REDDING, CT 06896

(*Committee of Connecticut Yankee Council-Boy Scouts of America)



The Hoyt Alumni Association (aka HAA!) present

“Community Cabins Campaign”

Scout units asked for them, we have the plans and space for them, now we need your help in getting the materials and building them!



With your help, we plan to build a community of 4 new 18-22 person cabins located in upper Hoyt

With your donation of materials or funding we can make this project a reality!

Please make funds payable to **“CT Yankee Council – HAA”**

Please contact Camp Masters

Ray Pflomm at rflum39@earthlink.net -or- Roger Williams at 203-321-9408 - rww@optonline.net to discuss your involvement in this project.

THANK YOU in advance for your generous support!!!

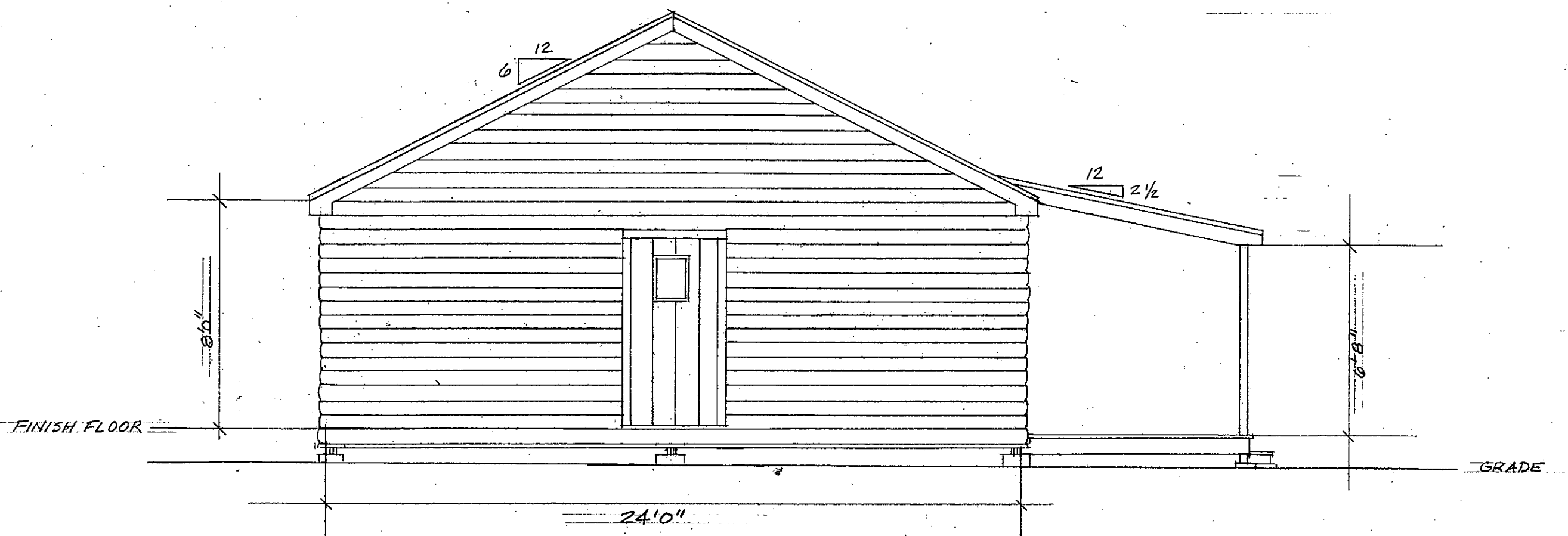
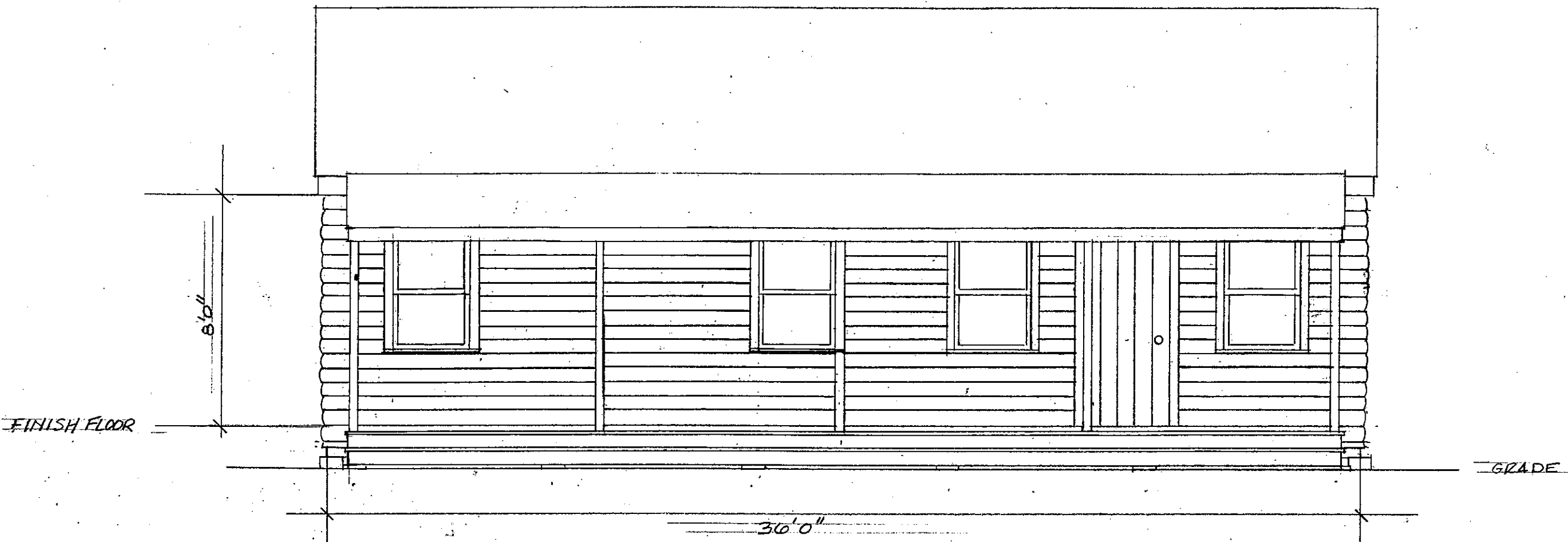
www.HoytScoutCamp.org

Connecticut Yankee Council • P.O. Box 32 • 60 Wellington Road • Milford, CT 06460

(203) 876-6868 • (800) 333-7905 • info@ctyankee.org

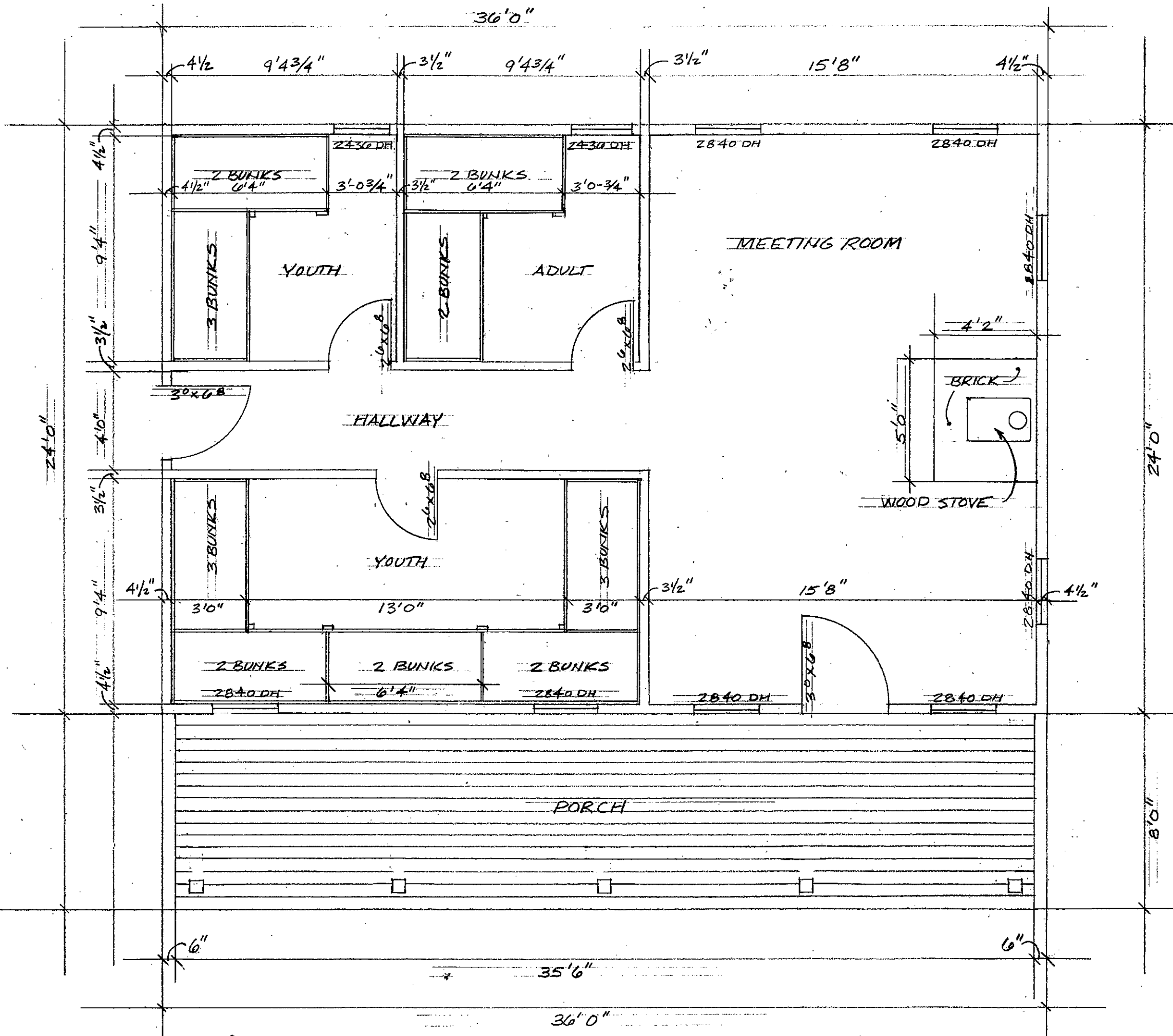


Hoyt Scout Cabin Material List			
Qty	Building Materials	Each	Total
2	1x6x10' No. 3 rough-sawn cedar (rake moulding)	\$11.00	\$22.00
6	2x4x10' DF (gable studs)	\$4.20	\$25.20
3	12' 2x8 DF (ridge)	\$10.08	\$30.24
2	1x6x16' No. 3 rough-sawn cedar (rake moulding)	\$17.60	\$35.20
1	Bostitch 8D ring coil nails	\$35.99	\$35.99
2	1x8x14' No. 3 rough-sawn cedar (rake boards)	\$20.30	\$40.60
3	Schlage F-Series Plymouth privacy lockset	\$16.69	\$50.07
10	Brown aluminum roof drip edge	\$6.25	\$62.50
5	4x4x8' SYP #1 treated (deck posts)	\$13.20	\$66.00
20	Tubes PL400 construction adhesive	\$4.33	\$86.60
5	12', 10" diameter concrete tube forms	\$17.85	\$89.25
4	1x8x16' No. 3 rough-sawn cedar (rake boards)	\$23.20	\$92.80
8	4x4x8' treated posts	\$13.20	\$105.60
2	Bostitch 6D galv. coil nails	\$53.39	\$106.78
1	9' x 100' Roll housewrap	\$114.66	\$114.66
7	1x8x12' No. 3 rough-sawn cedar (rake boards)	\$17.40	\$121.80
2	Schlage F82 lever entrance lock	\$60.99	\$121.98
2	Roofing underlayment	\$67.99	\$135.98
2	Bostitch 4D galv. coil roofing nails	\$71.19	\$142.38
2	Bostitch 12D galv.coil nails	\$74.19	\$148.38
6	5 lb. boxes 10Dx1-1/2" joist hanger nails	\$25.92	\$155.52
6	2x8x20' SYP #1 treated (deck ledger and girder)	\$26.00	\$156.00
3	Bundles, GAF Timberline Hip and Ridge	\$58.50	\$175.50
174	LUS28Z Simpson 2x8 joist hangers	\$1.16	\$201.84
3	Hollow-core Birch pre-hung interior doors 2668	\$72.15	\$216.45
45	80 lb. concrete mix	\$4.95	\$222.75
28	2x8x10' DF (porch rafters)	\$8.40	\$235.20
1	Hollow flush steel entrance door 3068	\$242.00	\$242.00
28	2x8x8' SYP #1 treated (deck floor joists)	\$9.28	\$259.84
16	2x8x20' DF (collar ties)	\$16.80	\$268.80
1	Hollow flush steel entrance door with lite 3068	\$298.00	\$298.00
46	2x4x16' DF (wall plates)	\$6.72	\$309.12
15	Bigfoot concrete footing base	\$21.95	\$329.25
12	2x10x20' SYP #1 treated (girders)	\$34.40	\$412.80
2	Andersen 244DH2436 windows	\$265.50	\$531.00
56	2x8x16' DF (rafters)	\$13.44	\$752.64
56	2x8x12' SYP #1 treated (floor joists)	\$14.64	\$819.84
230	92-5/8" 2x4 DF KD (wall studs)	\$3.60	\$828.00
40	1/2" CDX (roof sheathing)	\$21.19	\$847.60
27	3/4" Advantech T&G underlayment	\$33.75	\$911.25
50	1/2" CDX (wall sheathing)	\$21.19	\$1,059.50
56	Bundles, GAF Timberline Ultra roof shingles	\$31.50	\$1,764.00
8	Andersen 244DH2840 windows	\$299.80	\$2,398.40
2,640	2x8 KD Spruce log siding	\$2.20	\$5,808.00
	Subtotal		\$20,837.31
Qty	Bunk Materials	Each	Total
6	2x4x20' DF (bunk frames)	\$8.40	\$50.40
8	2x4x14' DF (bunk frames)	\$5.88	\$47.04
2	2x4x12' DF (bunk frames)	\$5.04	\$10.08
4	4x4x12' DF (support posts)	\$17.82	\$71.28
8	1x6x14' No. 2 White Pine (bunk frame trim)	\$11.90	\$95.20
1	Nails/screws	\$21.00	\$21.00
	Subtotal		\$295.00
	Total Cabin and Bunk Materials		\$21,132.31



HOYT SCOUT RESERVATION
 288 SIMPAUG TURNPIKE
 REDDING, CT 06890
 SCOUT CABIN
 APRIL 9, 2013

SCALE: 1/4" = 1'0"



HOYT SCOUT RESERVATION
 288 SIMPAUG TURNPIKE
 REDDING, CT 06890

SCOUT CABIN (18)
 MARCH 17, 2013

SCALE: 1/4" = 1'0"